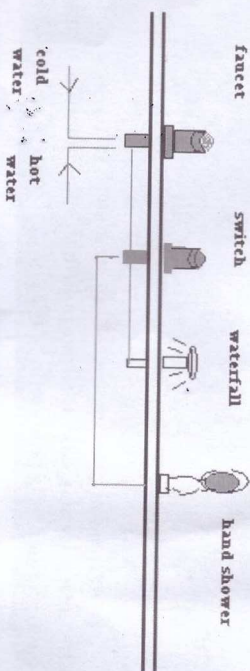


you install. Please contact us or our agent when you need

Parameter of Electricity

Power supply		Water Engine		heating	Engine capability
voltage	frequency	Power	current	Power	Safety engine work efficiently. slight noise
AC220-240	50/60Hz	750W	3A-4A	1500w	

Drawing of Mixer Connection



.Fixing Steps

1 Choose position for installing

Organize the drainer system Plug for power supply pipe for water enter. Then place bathtub on the spot. Adjust the feet to make the tub flat.

2. Connect the drainer system

The flexible pipe of drainer located under the bathtub. Please fix this pipe in the cloaca and seal it. please do not fold the pipe to stop the water out. as Image 2.1

3. Connect water pipe

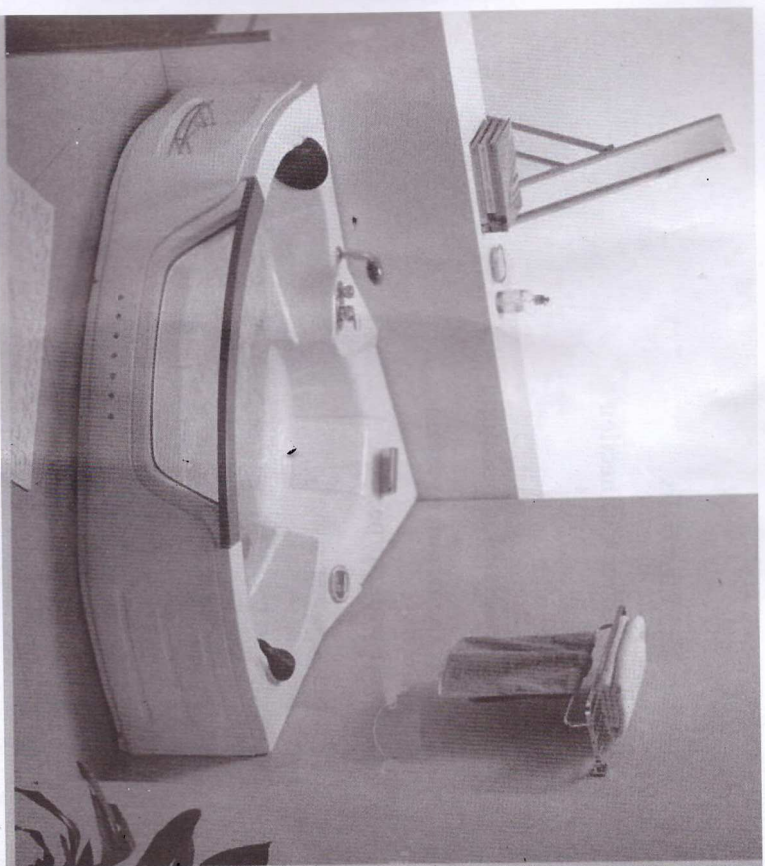
Water pipe is able to bear high pressure. Please connect this pipe follow the instruction, it will be better to place a valve between the water supply and each pipe

4. Connect power supply

50/60Hz 220V~230V are suit for this bathtub. Please organize the plug as showing image 2.2 and make it waterproof. Please test it workable.

Note: double color (yellow and green) wire lead to the earth from the engine, one end connect the iron(or steal) structure, the other end lead to the earth.

INSTALLATION MANUAL



MODEL: TA331
SIZE: 1350 x 1300 x 760mm



MODEL: TA317
SIZE: 1750 x 1350 x 750mm



MODEL: TA318
SIZE: 1800 x 850 x 720mm



MODEL: TA335
SIZE: 1700 x 1150 x 850mm

DIRECTORY

- . Contents
- . Security Items
- . Installation
- . Parameter of Electricity
- . Drawing of Mixer Connection
- . Fixing Steps
 - . Choose position for installing
 - . Connect the drainer system
 - . Connect water pipe
 - . Connect power supply
 - . Check and clear up
 - . Water and test the article
- . Manual
 - . Mixer & Water Massage
 - . Engine Structure
 - . Circuit Diagram
 - . Control panel
 - . Control panel operating manual
 - . maintenance instruction
 - . Ordinary Faulty instruction

1. Turn on/off

When power supply is available pushbutton 1 / 1 . then the control panel working. All functions in the control panel are available. Indication light is blue flash. Push this button again to stop working.

2. Radio

Push button 'TUN' to turn on radio. Continue pushing it to change wave band.

Change the volume by button 'VOL-' or 'VOL+'.

3. Touch the lamp key to turn on the under water lamp. Touch again to turn off.

4. Engine working. Touch engine button to make the engine work, stop working by touch the button again.

5. Massage function: push the left end of 'strong/weakly button' to make it stronger massage, Right end to make it weakly

Some of above feature may differ from your bathtub, it depends the buyer choose the function when they buy.

Maintenance instruction

1. Please clean the bathtub by liquid wash and soft cloth. Acetone Ammonia and organic solvent are forbidden. If sterilize, don't use formaldehyde or comprise formaldehyde item or it will get your tub cautery .
2. Do not insolate. Do not freeze .
3. When the surface was slight broken. Please use the 1200 sand paper then use 2000 water sand paper to grind, at last polish by soft cloth
4. Accessory: Clean the accessory by the soft cloth.

Ordinary Faulty instruction

Normal faulty	Reason of faulty	Remove way
Fail to turn on/off	Switch cut off ,power supply not connecting	Check the power supply connection
	Cable box do not connect with the key of turn on/off	Check and connect it
Display Do not show the function	Fuse of cable burn out	Replace by new one
	Cable box do not connect with the key of turn on/off	Check and connect it
Lamp fail	Display stop working	Replace by new one
	Cable box do not connect with the key of turn on/off	Check and connect it
Out of control	Faulty of Lamp overload	Replace the new lamp
	Break between the cable box and display	Check connection of the cable box and display then return on
Engine stop working	No power for engine	Check connect well or not
	Stop working no water	To make sure the water enough
Engine stop working	Impeller jammed	Clean the jamming articles or replace new one
	Out of control by key turn on/off	Replace new key
Radio stop working	Close or faulty of Circuit Diagram	Re-turn on or check the speaker
	Wave or VOL close	Turn on the wave or adjusting volume
Engine working but no massage function	No receiveing wave band or weakly wave	search the wave band again
	No power supply	Check the plug and make it stable
Water leaking	Impeller damage or there is air inside the engine	Replace impeller or eliminate the inside air
	Some connection loosen or without sealcan	Check and make connection tight and sealing
Little Water spring out from hand shower and water fall	Cartridge of changeover switch damage	Change new cartridge
	Changeover switch is not on the certem position or the water weakly pressure	Change new changeover switch or increase pressure
	Water pipe was jammed	Remove the jams inside the pipe

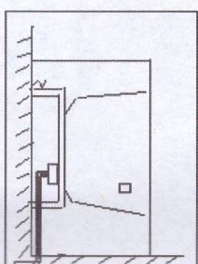


Image 2.1

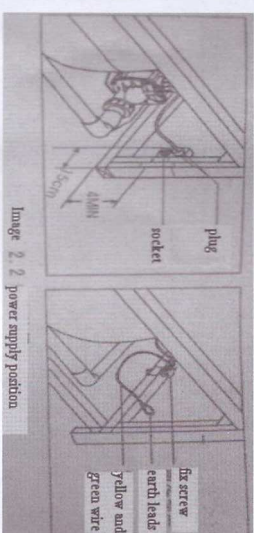


Image 2.2 power supply position

5. Check and clear up

After the above steps, please check every connection sealed, clear up the inner of tub by water. Do not let any floatar articles to go into circulation system or the pipe and Jet and engine will be jammed

6. Water and test the article

After clear up, close the drainage. Lead the water into the tub. make sure that no leaking every connection. Then turn on the power after the water overrun the highest jets of the tub.

Manual

1. Mixer.

Pull up the small hand is to open faucet, turn the small hand to left and right to choose the hot and cold water. Change the switch to choose hand shower or waterfall, as Image 3.1

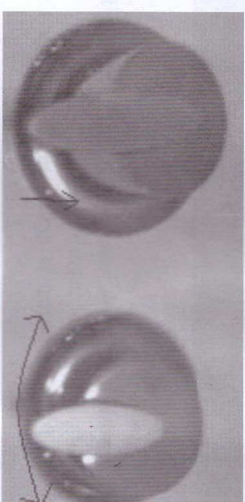
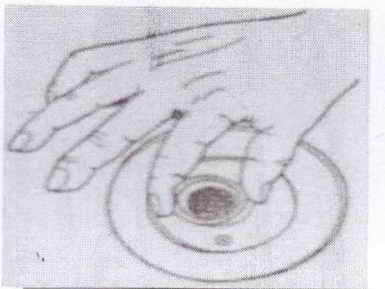


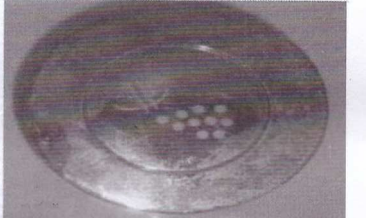
Image 3.1

2. Water Massage

Water massage is effected by the water and air circulate ,you can adjust the massage function stronger and weakly by hand or the control panel,showing as picture 3.2



jet adjusting

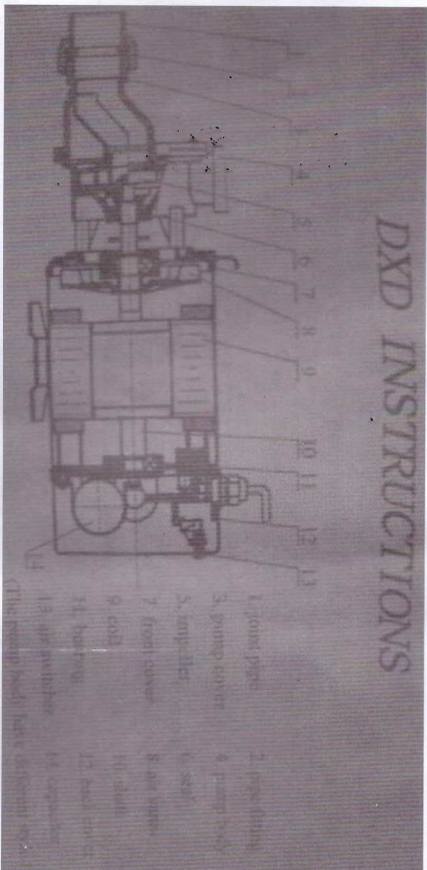


Strong/weakly adjusting



Image 3.3

on/off



Usage

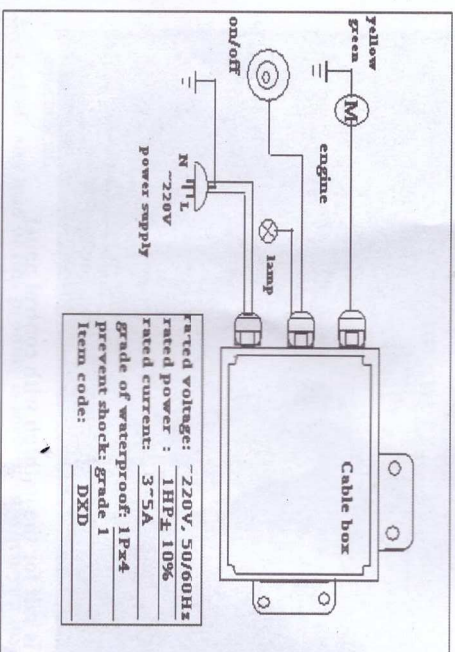
1. This type of pump, fitted to the bathtub or pool, can be used for massage in the bath. It can also be used for aquatic product farming
2. Don't let dust or such other things into the pump in order not to damage the seal, resulting in the leak.
3. Make sure the motor is grounded and the mains are equipped with a protector.
4. keep all wires dry
5. The ID of non-choric the tube for the air switcher should be 3mm wide

CAUTIONS

1. Don't try to open the engine unless you are the professional.
2. Don't start the engine if there is no water in the engine in case you'll get the seal damaged.
3. The power network must meet the requirements engraved in the plate on the engine.

4. the engine and the other steel parts must be grounded with the copper wires thicker than 1mm wide
5. This type of pump has a quick flow. It's not a self-pump, it can be used for other liquids.
6. The engine will be hot when it running. Don't touch it not to get burnt.

Circuit Diagram



This circuit diagram is suit for the bathtub without control panel

